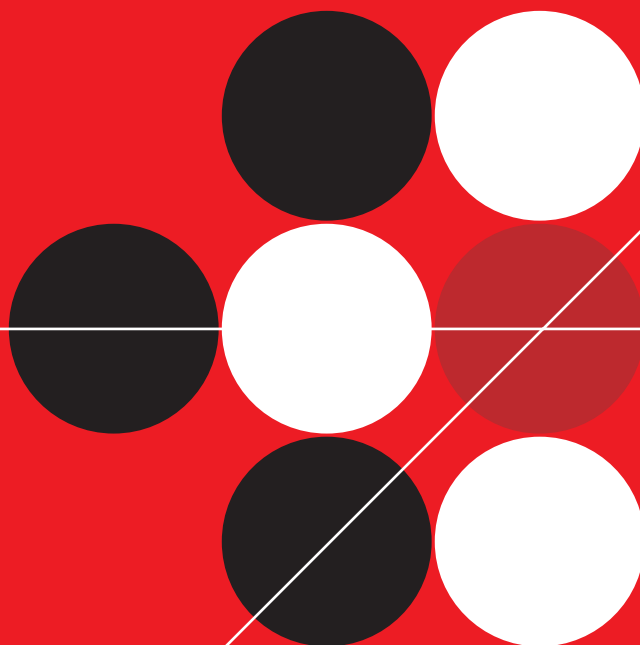


TREND MICRO™

Network VirusWall™ Enforcer 2500

Upgrade Guide



Trend Micro Incorporated reserves the right to make changes to this document and to the products described herein without notice. Before installing and using the software, please review the readme files, release notes, and the latest version of the applicable user documentation, which are available from the Trend Micro Web site at:

<http://www.trendmicro.com/download>

Trend Micro, the Trend Micro t-ball logo, Control Manager, OfficeScan, ServerProtect, TrendLabs, and Trend Micro Damage Cleanup Services are trademarks or registered trademarks of Trend Micro, Incorporated. All other product or company names may be trademarks or registered trademarks of their owners.

Copyright©2005-2006 Trend Micro Incorporated. All rights reserved.

Document Part No. NVEM12677/60313

Release Date: July 2006

Protected by U.S. Patent No. 5,623,600 and pending patents.

The user documentation for Trend Micro Network VirusWall Enforcer is intended to introduce the main features of the software and installation instructions for your production environment. You should read through it prior to installing or using the software.

Detailed information about how to use specific features within the software are available in the online help file and the online Knowledge Base at Trend Micro's Web site.

Trend Micro is always seeking to improve its documentation. Your feedback is always welcome. Please evaluate this documentation on the following site:

www.trendmicro.com/download/documentation/rating.asp

Contents

Preface

Network VirusWall™ Enforcer 2500 Documentation	P-2
About This Upgrade Guide	P-3
Audience	P-4
Document Conventions.....	P-4

Chapter 1: **Upgrading Network VirusWall™ Enforcer 2500**

Performing an Upgrade	1-2
Connecting to the Device	1-2
Using the Appliance Firmware Flash Utility	1-9
Running the Appliance Firmware Flash Utility	1-9
Updating the BIOS and BMC	1-11
Upgrading the Boot Code and Program File	1-17
Performing a Rollback	1-23

Index

Preface

Welcome to the Trend Micro™ Network VirusWall™ Enforcer 2500 Upgrade Guide. This book contains information about the tasks you need to perform to upgrade to Network VirusWall Enforcer 2500. This guide is intended for novice and advanced users of Trend Micro Control Manager™ and Network VirusWall who want to plan, deploy, and preconfigure Network VirusWall Enforcer 2500.

This preface discusses the following topics:

- *Network VirusWall™ Enforcer 2500 Documentation* on page 2
- *About This Upgrade Guide* on page 3
- *Audience* on page 4
- *Document Conventions* on page 4

Network VirusWall™ Enforcer 2500 Documentation

The Network VirusWall Enforcer 2500 documentation consists of the following:

- **Online Help**—Web-based documentation that is accessible from the Network VirusWall Enforcer Web console.

The Network VirusWall Enforcer Online Help contains explanations about the Network VirusWall Enforcer components and features.

- **Upgrade Guide (UG)**—PDF documentation that is accessible from the Solutions CD for Network VirusWall Enforcer 2500 or downloadable from the Trend Micro Web site.

The UG contains explanations about upgrading from Network VirusWall 2500 1.5 and 1.8 to Network VirusWall Enforcer 2500.

- **Getting Started Guide (GSG)**—PDF documentation that is accessible from the Solutions CD for Network VirusWall Enforcer 2500 or downloadable from the Trend Micro Web site

The GSG contains instructions on deploying Network VirusWall Enforcer, a task that includes planning, testing, and preconfiguration. See *About This Upgrade Guide* for chapters available in this book.

- **Administrator's Guide (AG)**—PDF documentation that is accessible from the Solutions CD for Network VirusWall Enforcer 2500 or downloadable from the Trend Micro Web site

The AG contains explanation of the Network VirusWall Enforcer architecture and instructions on how to configure and administer Network VirusWall Enforcer using the applicable management tools. Topics include Frequently Asked Questions (FAQs), Troubleshooting, and Glossary chapters.

Tip: Trend Micro recommends checking the corresponding Network VirusWall Enforcer link from the Update Center (<http://www.trendmicro.com/download>) or <http://www.trendmicro.com/en/products/network/nwwe/evaluate/overview.htm> for updates to the Network VirusWall Enforcer documentation and program file.

About This Upgrade Guide

The Network VirusWall Enforcer 2500 Upgrade Guide discusses the following topics:

- *Performing an Upgrade*—instructions for upgrading to Network VirusWall Enforcer 2500
- *Connecting to the Device*—instructions for uploading the new image file
- *Using the Appliance Firmware Flash Utility*—instructions for uploading the BIOS and BMC files
- *Performing a Rollback*—instructions for rolling back to a previous version of Network VirusWall

Audience

The Network VirusWall Enforcer 2500 documentation assumes a basic knowledge of security systems, including:

- Antivirus and content security protection
- Network concepts (such as IP address, netmask, topology, LAN settings)
- Various network topologies
- Network devices and their administration
- Network configuration (such as the use of VLAN, SNMP)

Document Conventions

To help you locate and interpret information easily, the Network VirusWall Enforcer 2500 documentation uses the following conventions.

CONVENTION	DESCRIPTION
ALL CAPITALS	Acronyms, abbreviations, and names of certain commands and keys on the keyboard
Bold	Menus and menu commands, command buttons, tabs, options, and tasks
<i>Italics</i>	References to other documentation
Monospace	Examples, sample command lines, program code, Web URL, file name, and program output
Note:	Configuration notes
Tip:	Recommendations
WARNING!	Reminders on actions or configurations that should be avoided
FAILOVER	Network VirusWall Enforcer interface connected to the device in a failover pair

TABLE 1. Conventions used in the Network VirusWall Enforcer 2500 documentation

Upgrading Network VirusWall™ Enforcer 2500

You can upgrade Network VirusWall 2500 from version 1.5 and 1.8 to Network VirusWall Enforcer 2500 by using the Appliance Firmware Flash Utility. The utility is included on the *Trend Micro Network VirusWall Enforcer 2500 CD*.

This chapter contains the following topics:

- *Performing an Upgrade* on page 1-2
- *Connecting to the Device* on page 1-2
- *Using the Appliance Firmware Flash Utility* on page 1-9
- *Performing a Rollback* on page 1-23

Performing an Upgrade

To upgrade from Network VirusWall 2500 version 1.5 or 1.8 to Network VirusWall Enforcer 2500, perform the following:

- Make a copy of your current network settings to ensure that you can restore the settings at anytime.
- Configure HyperTerminal to connect to the device.
- Update the BMC and BIOS.
- Update the boot code (.b file).
You must update the boot code (.b file) before updating the image (.r file).
- Update the image (.r file).

The following sections in this document will take you through the steps required for upgrading your device.

Connecting to the Device

Connect your computer to the device before using the Appliance Firmware Flash Utility.

Prepare the following before connecting to the device:

- A computer running Microsoft™ Windows™ with a LAN port and configurable IP address, as well as a CD drive
- An account belonging to the Administrator's group of the local computer on which the tool will run
- The *Trend Micro Solutions CD for Network VirusWall Enforcer 2500*, which contains the Application Firmware Flash Utility

To connect your computer to the device:

1. Connect one end of the included RJ45 Ethernet cable to port 5 (management port) and the other end to your computer.
2. Connect one end of a RS232 console cable to the back of the device and the other end to the console port on your computer.
3. Configure the Local Area Connection properties to use the following settings:

IP: 192.168.252.2 (or the same subnet with 192.168.252.x)

Netmask: 255.255.255.0

Default Gateway: blank

DNS: blank

Firewall: disabled

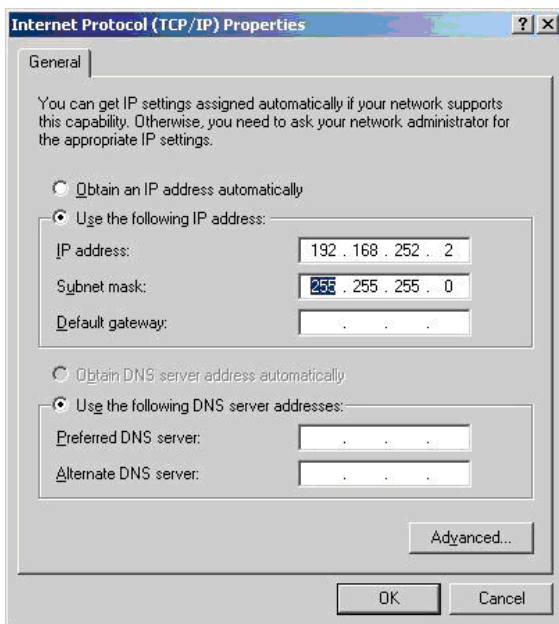


FIGURE 1-1. Computer IP Address and Subnet Mask

4. Open a terminal configuration software such as HyperTerminal for Windows:
 - a. Click **Start > Programs > Accessories > Communications > HyperTerminal**.
HyperTerminal prompts you for connection information.
 - b. Type a name for the connection and click **OK**.



FIGURE 1-2. Connection Name

- c. On the **Connect To** screen, select the communications port where the cable is connected.



FIGURE 1-3. Connect To Settings

- d. Click **OK**.

- e. On the **Properties** window, set the following:
- **Bits per second:** 115200
 - **Data Bits:** 8
 - **Parity:** None
 - **Stop bits:** 1
 - **Flow control:** None

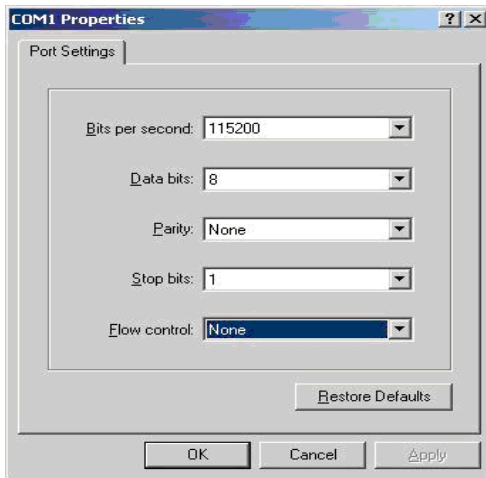


FIGURE 1-4. COM Properties

- f. Click **OK**.

- g. Click **File > Properties**, and then click the **Settings** tab.
- h. Set the following properties:
 - **Backspace key sends:** Del
 - **Emulation:** VT100
 - **Telnet Terminal ID:** VT102

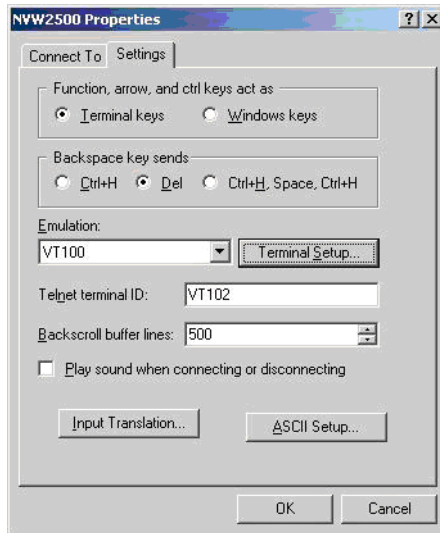
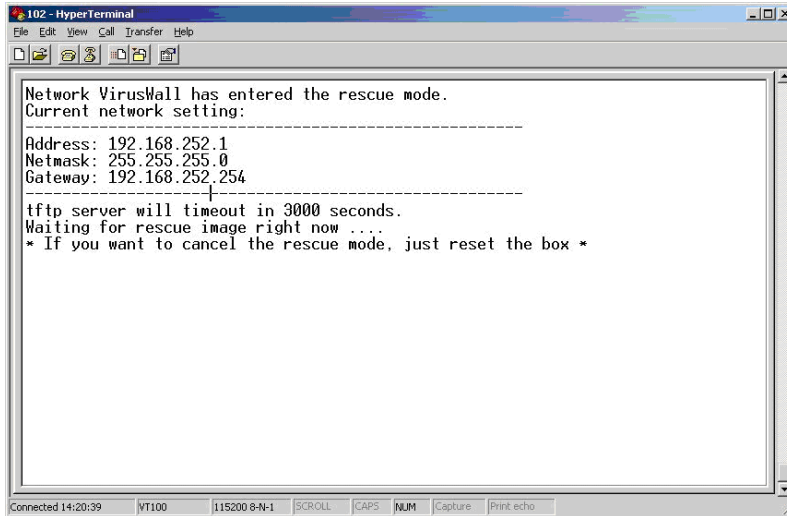


FIGURE 1-5. Connection Settings

5. Click **Terminal Setup** and select **Block** to have a clear view of the cursor location.
6. Click **OK**. The **Connection Settings** screen displays.
7. Click **OK** to complete the set up.

8. Turn on or reset the device. When the device resets, a message appears prompting you to enter rescue mode.
9. Type `r` at the prompt. The Network VirusWall Enforcer 2500 rescue mode settings appear.

Note: You will only have 5 seconds to type `r` at the prompt.



The screenshot shows a HyperTerminal window titled "102 - HyperTerminal". The window contains the following text:

```
Network VirusWall has entered the rescue mode.  
Current network setting:  
-----  
Address: 192.168.252.1  
Netmask: 255.255.255.0  
Gateway: 192.168.252.254  
-----  
tftp server will timeout in 3000 seconds.  
Waiting for rescue image right now ....  
* If you want to cancel the rescue mode, just reset the box *
```

The window also shows a menu bar (File, Edit, View, Call, Transfer, Help) and a status bar at the bottom with the following information: Connected 14:20:39, VT100, 115200 8-N-1, SCROLL, CAPS, NUM, Capture, Print echo.

FIGURE 1-6. Entering Rescue Mode

Using the Appliance Firmware Flash Utility

Use the Appliance Firmware Flash Utility to update the device BMC (baseboard management controller) firmware, BIOS (basic input/output system), LCM, and program file. The utility is a graphical user interface tool that provides a user-friendly method of uploading the latest program file and boot loader. The utility is included on the *Trend Micro Solutions CD for Network VirusWall Enforcer 2500*.

Running the Appliance Firmware Flash Utility

Before running the utility, ensure that you are using the latest NIC driver and that you have disabled any firewall applications on the computer used with the AFFU.

Running the Appliance Firmware Flash Utility (AFFU):

1. Log on to the computer used with the AFFU using an Administrator account.

Note: The account used to log on to the computer on which the utility will run must have administrator rights or should belong to the Administrator's Group. Otherwise, the utility cannot successfully execute.

2. Insert the *Trend Micro Solutions CD for Network VirusWall Enforcer 2500*, select the Appliance Firmware Flash Utility, and then click **Launch**.

The main console appears and automatically searches for connected Network VirusWall Enforcer 2500 devices.

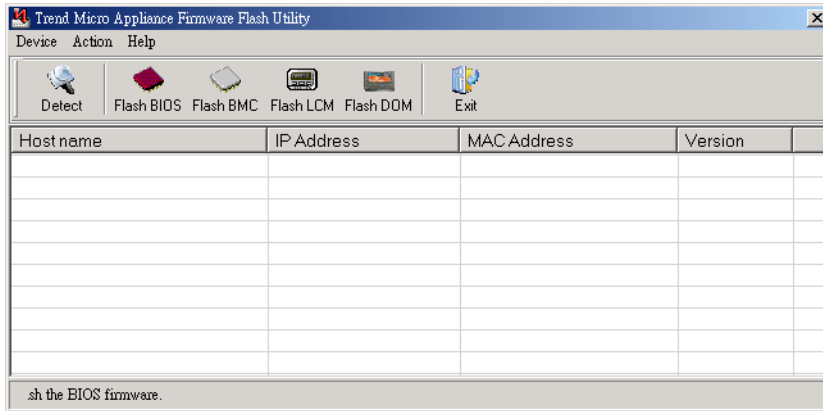


FIGURE 1-7. The Appliance Firmware Flash Utility

3. If the utility has not yet detected the Network VirusWall Enforcer 2500 device, click **Detect** on the toolbar menu. The utility detects the Network VirusWall Enforcer 2500 device connected to the computer and lists it in the detection table.
4. Click the first row to select the detected device from the detection table.

Note: You can only upgrade one Network VirusWall Enforcer 2500 device at a time.

Updating the BIOS and BMC

To update the BIOS and BMC:

1. Click **Flash BIOS**. The Flash screen appears.

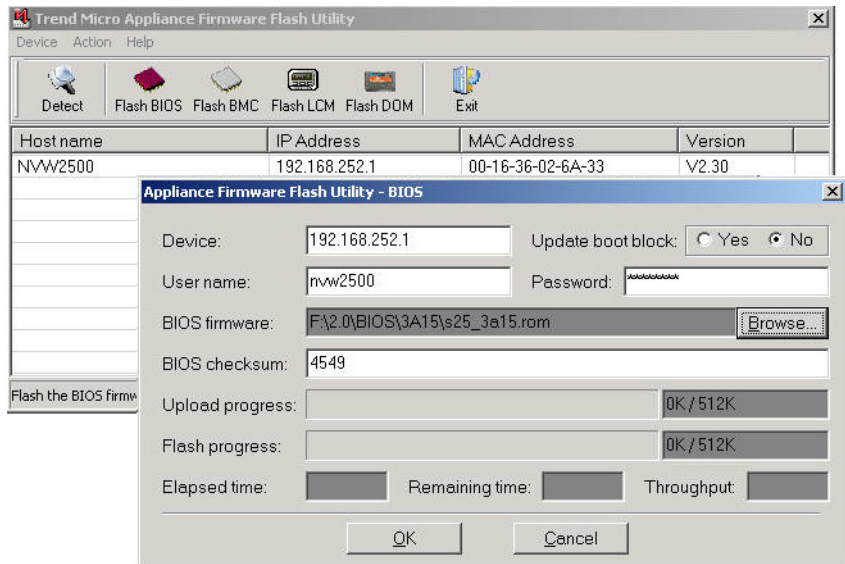


FIGURE 1-8. The Firmware Flash Utility

2. On the Flash dialog box, perform the following:

Note: The "Device" field value corresponds to the fixed Network VirusWall Enforcer 2500 device IP in rescue mode.

- a. Select **Yes** for **Update Boot Block**.

WARNING! *If a power loss interrupts the BIOS boot block update, BIOS will no longer be able to operate. Type the following user name and password in the corresponding fields:*

User name: nvw2500

Password: qZTSpdum

- b. Type or click **Browse** to determine the location of the BIOS file (.ROM file). The default location of the file on the Network VirusWall Enforcer 2500 CD is [CD Drive]:\Programs\AFFU.
- c. Type the **BIOS checksum** value.

Note: You must type the checksum value to continue. Refer to the BIOS/BMC Checksum Reference for the corresponding checksum value for your BIOS version. You can download the latest version of the BIOS/BMC Checksum Reference from <http://www.trendmicro.com/download>.

- d. Click **OK**.

- e. On the warning message that displays, click **YES** to continue and start the Appliance Firmware Flash Utility process.

WARNING! *During the Appliance Firmware Flash Utility process, do not turn off, reset, or modify any device settings. Wait for the automatic reboot before performing any further tasks.*

The utility console displays the progress and informs you of a successful BIOS firmware update.

While refreshing the settings, Network VirusWall Enforcer 2500 enables failopen and allows network traffic to pass through the device. However, there is approximately 30 seconds of downtime when the Network VirusWall Enforcer 2500 ports are disconnected from the network. After NVW refreshes the settings, it establishes the network connection.

3. Turn on the device. When the device resets, a message appears prompting you to enter rescue mode.
4. Type `r` at the prompt. The Network VirusWall Enforcer 2500 rescue mode settings appear.
5. Run the Appliance Firmware Flash Utility again (see Step 2 through Step 4 in *Running the Appliance Firmware Flash Utility* on page 1-9).
6. Click **Flash BMC**. The Flash screen appears.

7. On the Flash dialog box, perform the following:
 - a. Type the following user name and password in the corresponding fields:

User name: nvw2500

Password: qZTSpdum

Note: These values are the default fixed values and the system cannot accept any changes to them.

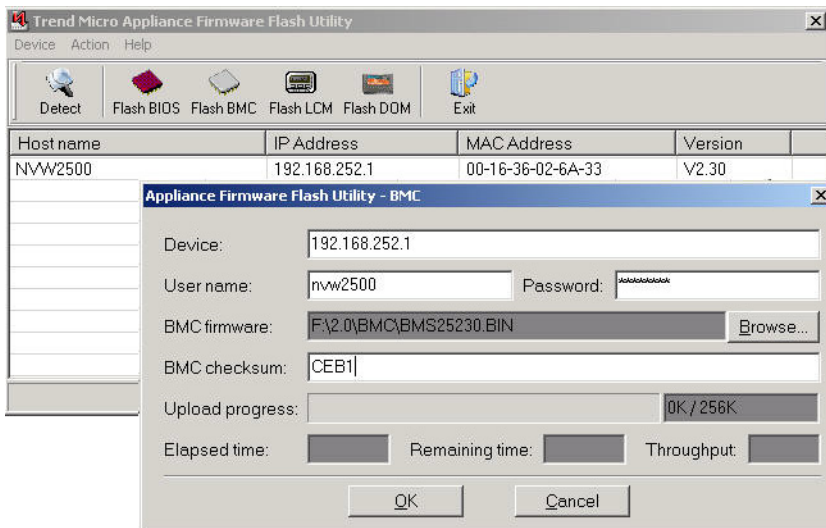


FIGURE 1-9. The Firmware Flash Utility

- b. Type or click **Browse** for the location of the BMC file (.BIN file). The default location of the file on the Network VirusWall Enforcer 2500 CD is [CD Drive]:\Programs\AFFU.
- c. Type the **BMC checksum** value.

Note: You must type a checksum value to continue. Refer to the BIOS/BMC Checksum Reference for the corresponding checksum value for your BMC version. You can download the latest version of the BIOS/BMC Checksum Reference from <http://www.trendmicro.com/download>.

- d. Click **OK**. A warning message displays.
- e. Click **YES** to continue and start the Appliance Firmware Flash Utility process. A confirmation message displays.
- f. Click **OK**. The device will automatically shut down after the BMC file update.

WARNING! *During the Appliance Firmware Flash Utility process, do not turn off, reset, or modify any device setting.*

- 8. Turn on the device.

Upgrading the Boot Code and Program File

Before running the utility to upgrade the boot code, ensure that you have connected to Network VirusWall Enforcer 2500 using HyperTerminal and you are in rescue mode. See *Connecting to the Device* for more information. The upgrade procedure is the same for upgrading the boot code and image file. However, you must upgrade the boot code (.b file) before upgrading the program file (.r file).

To use the most up-to-date program file and boot loader, download them from the following Web site to your computer before upgrading:

www.trendmicro.com/download.

Otherwise, use the program file with factory defaults and the original boot loader located on the *Trend Micro Solutions CD for Network VirusWall Enforcer 2500*.

Note: If you are running PC-cillin™ 2002 or later, set the Personal Firewall settings to "low" or "medium" when using the utility.

To upgrade the boot code or program file:

1. Turn on the device. A message prompts you to type `r` to enter rescue mode.
2. Type `r` at the prompt. The rescue mode settings displays.
3. Run the Appliance Firmware Flash Utility again (see Step 2 through Step 4 in *Running the Appliance Firmware Flash Utility*).
4. Click **Flash DOM**. The Flash screen appears.

5. On the Flash dialog box, perform the following:
 - a. Click **Browse** and locate the boot code file (.b file). The default location of the file on the Network VirusWall Enforcer 2500 CD is [CD Drive]:\Programs\AFFU.
 - b. Click **Open**.

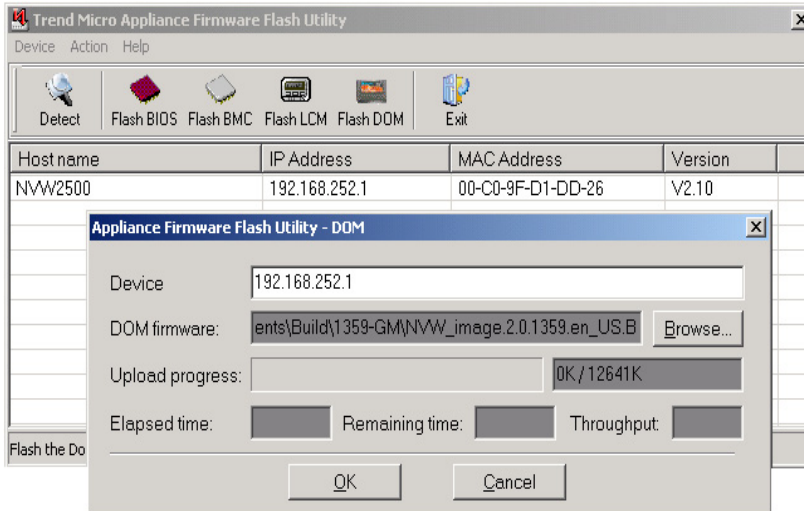
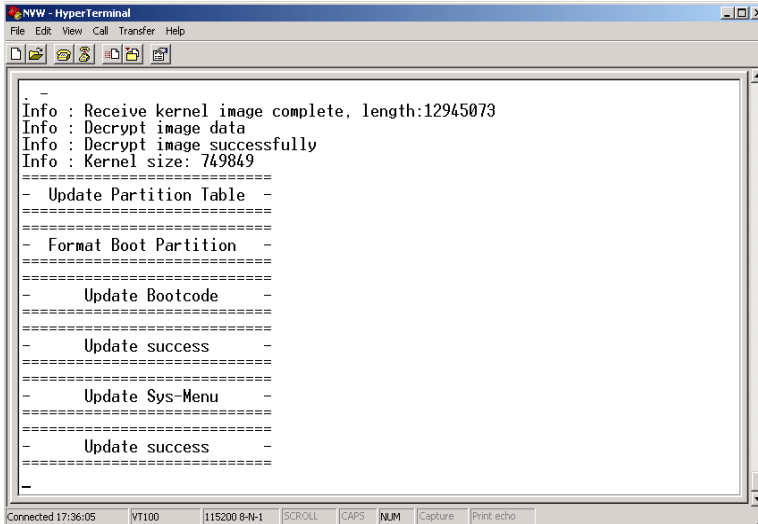


FIGURE 1-11. The Firmware Flash Utility

7. After the update is complete, wait for the device to automatically reboot.



```

-
Info : Receive kernel image complete, length:12945073
Info : Decrypt image data
Info : Decrypt image successfully
Info : Kernel size: 749849
=====
- Update Partition Table -
=====
- Format Boot Partition -
=====
- Update Bootcode -
=====
- Update success -
=====
- Update Sys-Menu -
=====
- Update success -
=====
-

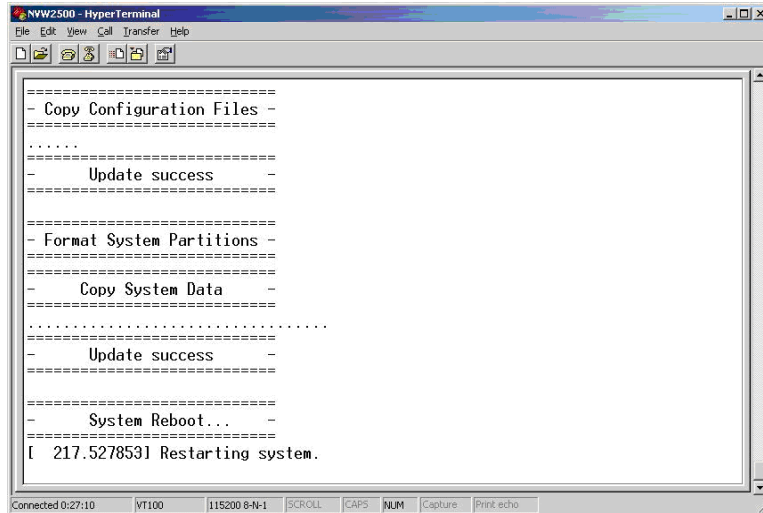
```

FIGURE 1-13. Boot code Version Upload Success Example

Note: The **length** and **Kernel size** may be different depending on the image.

8. Use the utility again to upload the new release version (.r file) of the program file. The default location of the file on the Network VirusWall Enforcer 2500 CD is [CD Drive]:\Programs\AFFU. Repeat this procedure from the beginning.

9. After the update is complete, wait for the device to automatically reboot. The Preconfiguration login screen appears after this screen.



The screenshot shows a HyperTerminal window titled "NW2500 - HyperTerminal". The window contains the following text, which represents the output of a device boot process:

```
=====
- Copy Configuration Files -
=====
.....
- Update success -
=====
- Format System Partitions -
=====
- Copy System Data -
=====
.....
- Update success -
=====
- System Reboot... -
=====
[ 217.527853] Restarting system.
```

At the bottom of the window, there is a status bar with the following information: Connected 0:27:10, VT100, 115200 8-N-1, SCROLL, CAPS, NUM, Capture, Print echo.

FIGURE 1-14. Device Reboot Example

10. Confirm the update by checking the version in the lower right hand corner of the title box on the Preconfiguration login screen. In this example, the program version is 1359.

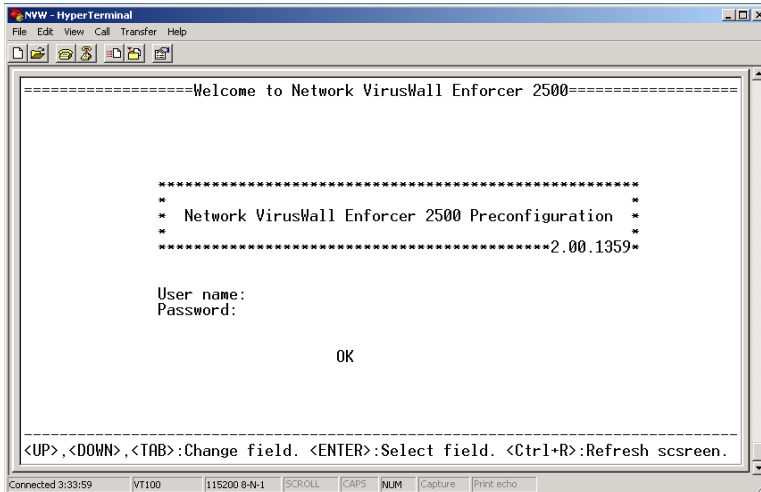


FIGURE 1-15. Successful program version upload example

Performing a Rollback

You can rollback Network VirusWall Enforcer 2500 to Network VirusWall 2500 1.5 and 1.8 by using the Appliance Firmware Flash Utility. The utility is included on the *Trend Micro Network VirusWall Enforcer 2500 CD*. The rollback procedure is the same as the upgrade procedure. However, to rollback to Network VirusWall 2500 1.5, you must have a previously saved version of the image file.

Before running the Appliance Firmware Flash Utility to rollback the boot code, ensure that you have connected to Network VirusWall Enforcer 2500 using HyperTerminal and you are in rescue mode. See [Connecting to the Device](#) for more information. The rollback procedure is the same for the boot code and image file. However, you must replace the boot code (.b file) before replacing the program file (.r file).

Use the Network VirusWall 2500 1.8 program file with factory defaults and the original boot loader located on the *Trend Micro Solutions CD for Network VirusWall Enforcer 2500* or use a previously saved Network VirusWall 2500 1.5 or 1.8 version.

Note: If you are running PC-cillin™ 2002 or later, set the Personal Firewall settings to "low" or "medium" when using the utility.

To replace the boot code or program file:

1. Turn on the device. A message prompts you to type `r` to enter rescue mode.
2. Type `r` at the prompt. The rescue mode settings displays.
3. Run the Appliance Firmware Flash Utility again (see Step 2 through Step 4 in [Running the Appliance Firmware Flash Utility](#)).
4. Click **Flash DOM**. The Flash screen appears.

5. On the Flash dialog box, perform the following:
 - a. Click **Browse** and locate the boot code file (.b file). The default location of the file on the Network VirusWall Enforcer 2500 CD is [CD Drive]:\Programs\AFFU\downgrade.
 - b. Click **Open**.

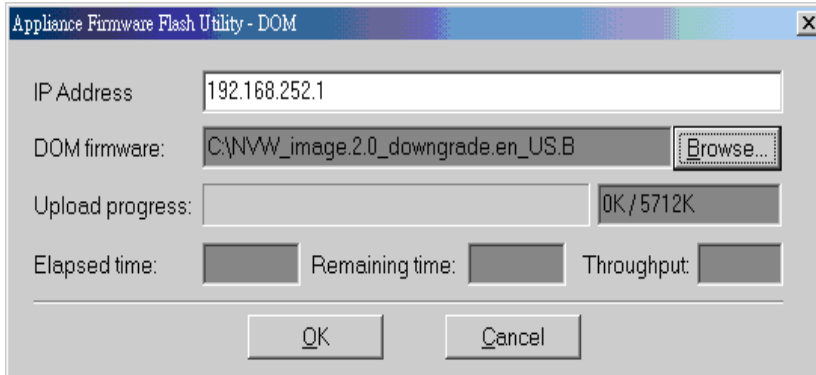
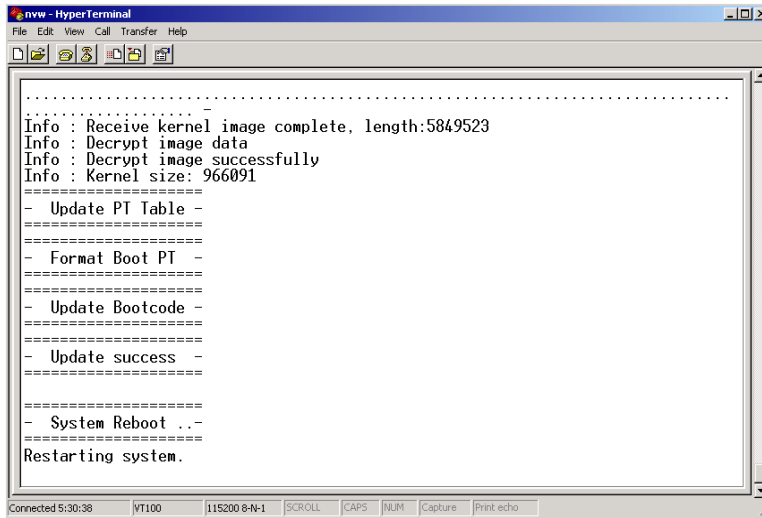


FIGURE 1-16. The Firmware Flash Utility

7. After the update is complete, wait for the device to automatically reboot.



```
nvw - HyperTerminal
File Edit View Call Transfer Help
.....
Info : Receive kernel image complete, length:5849523
Info : Decrypt image data
Info : Decrypt image successfully
Info : Kernel size: 966091
=====
- Update PT Table -
=====
- Format Boot PT -
=====
- Update Bootcode -
=====
- Update success -
=====

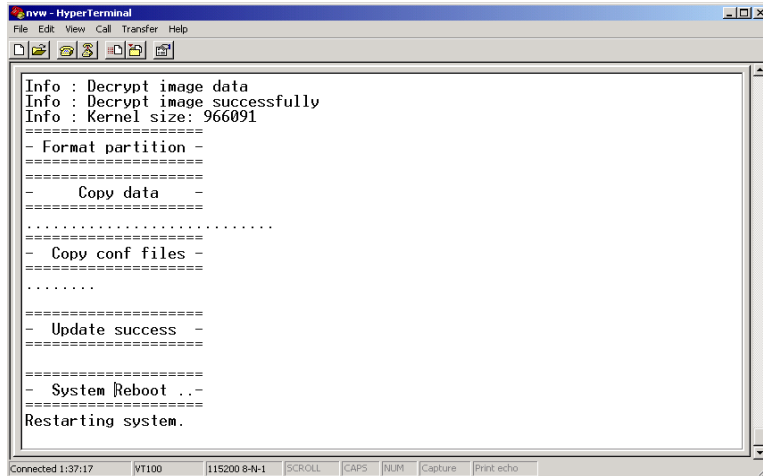
=====
- System Reboot ..-
=====
Restarting system.

Connected 5:30:38  VT100  115200 8-N-1  SCROLL  CAPS  NUM  Capture  Print echo
```

FIGURE 1-18. Boot code Version Upload Success Example

Note: The **length** and **Kernel size** may be different depending on the image.

- Use the utility again to upload the previous version (.x file) of the program file. The default location of the file on the Network VirusWall Enforcer 2500 CD is [CD Drive]:\Programs\AFFU\downgrade.



```
nvw - HyperTerminal
File Edit View Call Transfer Help
Info : Decrypt image data
Info : Decrypt image successfully
Info : Kernel size: 966091
=====
- Format partition -
=====
- Copy data -
=====
.....
- Copy conf files -
=====
.....
=====
- Update success -
=====
=====
- System Reboot ..-
=====
Restarting system.
```

FIGURE 1-19. Release Version Upload Success Example

- After the update is complete, wait for the device to automatically reboot. The Preconfiguration login screen appears after this screen.

10. Confirm the update by checking the version in the lower right hand corner of the title box on the Preconfiguration login screen. In this example, the Network VirusWall 2500 version is 1.8 and the program version is 1146.

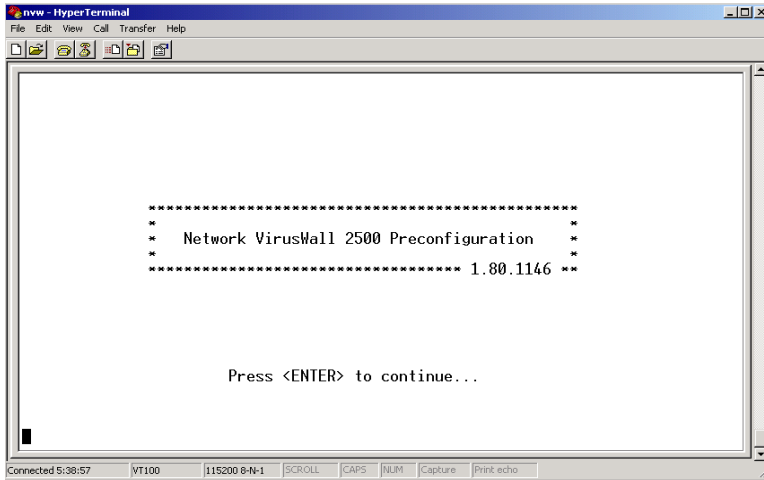


FIGURE 1-20. Preconfiguration login screen

Index

A

Administrator's Guide 2
appliance firmware flash utility 1-9
audience 4

B

boot code 1-17

C

connecting to the device 1-2

D

document conventions 4
documentation 2

G

Getting Started Guide 2
GSG. See Getting Started Guide.

N

Network VirusWall 2500
Administrator's Guide 2
documentation 2
audience 4
conventions 4
Getting Started Guide 2
online help 2
Upgrade Guide 2
Notes
Update Center 2

O

OLH 2
Online help 2

P

performing an upgrade 1-2
preface 1
program file 1-17

R

RJ45 ethernet cable 1-3
rollback 1-23
RS232 console cable 1-3

T

tips
documentation 2

U

Update Center 2
updating the BIOS and BMC 1-11
Upgrade Guide 2

W

Who should read this document
audience 4

